

TRAILER TALK

The Trailer Authority

FLAMAN
TRAILERS

2017/2018 CATALOGUE



**PAGE 24
HEAVY DUTY
ENCLOSED**



**PAGE 17
FLATDECK TRAILERS**



**PAGE 19
HORSE & STOCK**



LOW PROFILE DUMP TRAILERS PAGE 5

Published: May 15, 2017

Prices do not include taxes or tire recycling fee

Due to currency and freight fluctuation all prices are listed starting at and subject to change without notice on a per dealership basis.



AUTO HAULERS / ENCLOSED TRAILERS / UTILITY / FLATDECKS / INDUSTRIAL TRAILERS / HORSE & STOCK / HEAVY DUTY / SPECIALTY TRAILERS

www.flamantrailers.com

Prince Albert

TRAILER TEAM



guy.luchenski
@flaman.com

OPERATIONS
MANAGER



darin.kardash
@flaman.com

TRAILER SALES



derek.smith
@flaman.com

TRAILER SALES



brian.wisniak
@flaman.com

PARTS, SERVICE
& RENTALS

Southey

TRAILER TEAM



greg.flaman
@flaman.com

OPERATIONS
MANAGER



wendell.langford
@flaman.com

TRAILER SALES



phil.flaman
@flaman.com

TRAILER SALES



brian.holyoak
@flaman.com

TRAILER SALES



nathan.iaturnus
@flaman.com

TRAILER SALES



jim.reader
@flaman.com

PARTS, SERVICE
& RENTALS

Message to Our Customers

New products and new processes

As our industry and the way we communicate evolve, Flaman Trailers strives to be the leader in our field. What does being the leader mean to you, our customer?

It means having the newest and most diverse product offering available to you, whenever you want and wherever you are. That is why we have continued to expand our product offerings with more utility and cargo trailers, more flatdecks, new industrial trailers and a broader horse and stock line up. All of these new products you can find within these pages and on our newly designed website.

There are a lot of new products for one year, and there is still more. We are expanding our services to include full online purchasing and delivery of select trailers. If you know what you want, chances are you may not have to go to one of our locations to get the unit. Or if there is a really good deal online, you can secure it immediately and not miss out.

We are also training our staff to respond to you how you want to be responded to: by email, text and instant messaging – as communications evolve, so are we.

Lastly, and most importantly, we are continuing to listen and respond to you, our customer. We are conducting quarterly sample customer surveys to consistently receive feedback to improve. We honestly enjoy the feedback and you do not need to wait for a survey to give it; simply talk to a member of the trailer team or send an email to info@flaman.com. We are here to listen and learn.

We appreciate your business, thank you for your continued support. I hope you enjoy this annual edition of trailer talk, within it there are a lot of shiny and new trailers and also a lot of old and approved trailers. Enjoy the read!

*Steve Whittington
Trailer Division Manager
VP of Marketing and Customer Experience*

Your experience with Flaman Trailers doesn't end with a purchase.
Our service department is here for all your trailer
maintenance.



FLAMAN

TRAILERS

Saskatoon

TRAILER TEAM



kurt.flaman
@flaman.com
OPERATIONS
MANAGER



lee.prefontaine
@flaman.com
TRAILER SALES



cody.spence
@flaman.com
TRAILER SALES



terry.stadnyk
@flaman.com
TRAILER SALES



james.usselman
@flaman.com
TRAILER SERVICE



kevin.brehon
@flaman.com
PARTS & RENTALS

Moosomin

TRAILER TEAM



mark.steinger
@flaman.com
OPERATIONS
MANAGER



kevin.reimer
@flaman.com
TRAILER SALES



rob.leshchyshyn
@flaman.com
PARTS & SERVICE



kelly.stewart
@flaman.com
TRAILER SALES

Yorkton

TRAILER TEAM



cam.barton
@flaman.com
OPERATIONS
MANAGER



darrell.knash
@flaman.com
TRAILER SALES



sheldon.sleeva
@flaman.com
TRAILER SALES



josh.garbutt
@flaman.com
TRAILER SALES



jeff.sherwin
@flaman.com
PARTS, SERVICE &
RENTALS

Swan River

TRAILER TEAM



guy.vestby
@flaman.com
OPERATIONS
MANAGER

In this issue

Our Team	02
In This Issue	03
Dump Trailers	04
Flatdeck Trailers	08
Rules Of The Road	11
Flatdeck Trailers	12
Ag Transport	18
Horse & Stock	19
Specialty Trailers	20
Enclosed Trailers	22
Recreational Trailers	26
Car Haulers	28
Utility Trailers	30
Parts & Accessories	32
Rentals	36
Service & Warranty	38
Ramp Guide	39



Owning multiple trailers has just become more affordable

Cargo, Flatdeck & Dump in one!

Set up your tool crib on the jobsite with the **cargo attachment** and within minutes you can be ready for picking up building materials with the **flat deck attachment** or haul away garbage with the **dump attachment**.

Visit www.flamantrailers.com to view this trailer in action. There's no other trailer like it!



Attachments don't need insurance and they are 30-40% the price of another trailer.

How it works

Start with the Southland chassis then add your attachments



Hook Lift Chassis

Curb Weight: 4180 lbs
GVWR: 17600 lbs
Pull Capacity: 11000 lbs
Lift Capacity: 11000 lbs



Bin Attachment

Easily remove construction or demolition waste from a jobsite with the bin module.

HOOK LIFT 14' BOX
BOX DIMENSIONS 7.5' W X 45" H



Flatdeck Attachment

Drive a bobcat or quad right onto the flatdeck

HOOK LIFT 14' FLATDECK



Great as a mobile storage units.

Cargo Container Attachment

The Roll Off Cargo Container module gives you the functionality and accessibility of a cargo trailer at a lower cost.

HOOK LIFT 14' XR CARGO BOX

Heavy Duty Dumps

TRAILTECH L370 HD 16' Gooseneck Dump

- (3) 7,000 lb axles
- Electric hydraulic power pack
- 2 Way tailgate - spreader gate & barn doors

PRICING STARTING @ **\$18,500**

ALSO AVAILABLE
14' Gooseneck Dump
Model L270HD
(2) 7,000 lb axles
Pricing starting at **\$15,250**



Adjustable GN stem and heavy duty jack
King pin option available

3/16 HD Fenders

TRAILTECH Heavy Duty Dumps

- Champion scissor hoist & Tarp
- All tubing frame
- Complete wiring harness
- Uni-body design

Trailtech 2 Way 10' hand held electric / hydraulic power pack



DIAMOND C 24LPD L14 14' Low Profile Dump

- Heavy duty I-beam suspension
- E-Z Lube axles
- (2) 7000 axles
- Electric brakes
- 10 Gauge steel box
- 110v Trickle charger

PRICING STARTING @ **\$11,995**

3-Way tailgate
Heavy Duty Gate, Door Latches and Hinges



10 Gauge body
Ask about the Optional 7 GA super duty body.
Upgrade to 215/75R175 tires

TRAILTECH L270HD 12' & 14' Dump

TRAILTECH
MODEL SHOWN:
14' DUMP



12' Dump L270HD-12
(2) 7,000 lb axles

PRICING STARTING @ **\$13,250**

SOUTHLAND SL 280 HD 14' Dump

- 14' x 6.8'
- (2) 8,000 lb axles
- Lockable toolbox
- 17,600 GVWR
- Champion scissor hoist
- Tarp included
- Hydraulic Jack

PRICING STARTING @ **\$13,750**

2-Way tailgate & aluminum ramps

10 Gauge body

110 V Charger



14' Dump L270HD-14
(2) 7,000 lb axles

PRICING STARTING @ **\$13,750**

Commercial Dumps

Innovation. Confidence. Expertise.

LINE-X takes incredible pride in the products and people it engineers and supports. Although mainly recognized as a leader in spray-on bedliners, LINE-X also provides advanced solutions in the form of protective coatings, specialty automotive coatings and vehicle accessories. Ask us about adding this option to your trailer today!

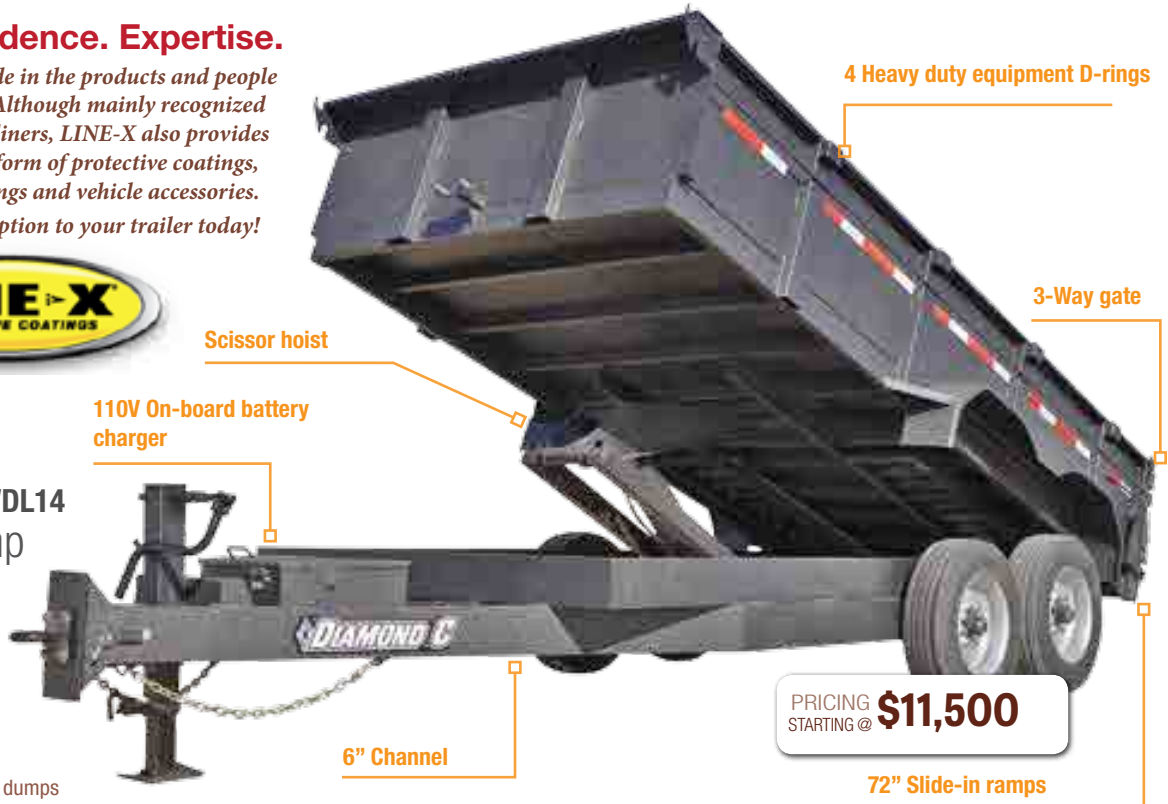


DIAMOND C 21WDL14 Commercial Dump

- (2) 7,000 lb axles
- E-Z Lube axles
- Slide in ramps
- Scissor lift & Tarp



All our Diamond C dumps come with a roll tarp



PRICING STARTING @ **\$11,500**



DIAMOND C 22WFD Gooseneck Deck-Over

- (2) 10,000 lb axles
- E-Z lube axles
- Slide in ramps
- Scissor lift & tarp
- 48" Sides

Optional tandem dual shown - call for pricing



Light Duty Dumps

SOUTHLAND E270 Economy Dump

14' Dump
(2) 7000 lb spring axles
Scissor hoist
Ramps

PRICING STARTING @ **\$10,500**

PRICE INCLUDES TARP



PRICING STARTING @ **\$8,350**



Can be towed with 1/2 ton truck

DIAMOND C 46ED-12X77 Mid-Size Light Duty

12' x 77" Dump
(2) 5200lb electric brake axles
5 foot ramps
Double rear doors
7,000 lb jack
Tarp

SOUTHLAND E252T-10 Mid-Size Light Duty

(2) 5200 lb spring axles electric braking axle
HSS tube mainframe
Topwind drop leg jack
15" white steel rims
Adjustable 2-5/16" coupler
Dual cylinder lift
Barn door style

PRICING STARTING @ **\$8,650**



MODEL SHOWN: 10' DUMP

Lowboy Equipment Trailers

SOUTHLAND 18LBE-14

Flatdeck Trailer

(2) 7000 lb spring axles

82" deck width

Rub rails and stake pockets

Aluminum slide in ramps or steel flip up ramps

Starting @ **\$6,095**



MODEL SHOWN WITH OPTIONAL FLIP UP RAMPS



Ask about the new tech ramp option!

TRAILTECH L270 DT

Flatdeck Trailer

8" Tube mainframe

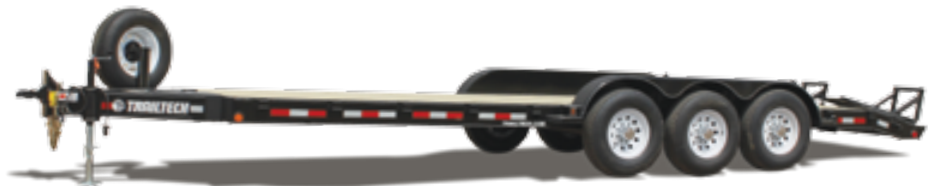
18' deck + 2' dovetail

(2) 7000 lb Torsion axles

Adjustable ball coupler/pintle

Curb weight: 3,026 lb

Starting @ **\$7,850**



MODEL SHOWN WITH OPTIONAL SPARE TIRE



TRAILTECH L270T-20

Flatdeck Trailer

8" Tube mainframe

16' Tilt + 4' stationary

(2) 7000 lb Torsion axles

Electric braking

Curb weight: 3173 lb

Starting @ **\$8,995**

TRAILTECH L370DT PH

Flatdeck Trailer

8" Tube mainframe

22' Deck with 2' dovetail

(3) 7000 lb Torsion axles

Electric braking

Curb weight 3800 lbs

Starting @ **\$12,500**



DIAMOND C 19LPX - 18

Extreme Duty Flatdeck

- I-Beam frame for low profile design
- 2-7,000 lb or 3-7000 lb axle configurations
- A-frame tool box deck extension
- 12K Drop leg jack
- Starting @ **\$7,495**



MODEL SHOWN WITH OPTIONAL 24" WIDE RAMPS

***Diamond C
Flat Deck Trailers***

DIAMOND C 48HDT

Tilt Trailer

- (2) 7000 lb E-Z lube axles
- 6 Stake pockets and 4 D-rings
- Low profile I-beam mainframe
- 12k Drop leg jack
- LED lights / 16' tilt deck / Bed width: 82"
- 4' Stationary **\$8,995**
- 6' Stationary **\$9,250**



MODEL SHOWN: 20' FOLD UP RAMPS

TRAILTECH CEL270

Construction Series Trailer

- 7" Channel iron frame
- Slide in or fold up ramps available
- (2) 7000 lb electric braking axles
- Protected LED lights and wiring
- Fender guards
- CEL270 18' w/ fold up ramps **\$6,550**
- CEL270 20' w/ fold up ramps **\$6,750**

Highboy Equipment Trailers



SOUTHLAND

Equipment Trailer

- (2) 7000 lb E-Z lube spring axles
- Aluminum ramps
- 7k Drop leg jack
- Rub rail and stake pockets / LED Lights
- 235/80R16 Tires
- Black 8-bolt rims
- Starting @ **\$8,350**

DIAMOND C

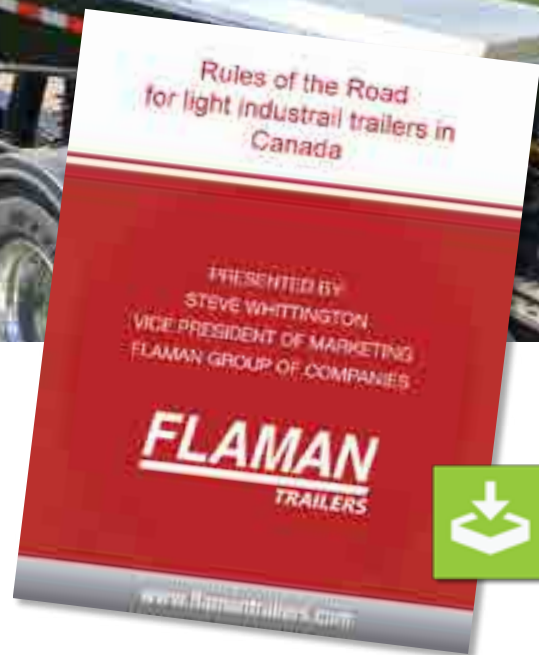
Highboy Equipment Trailer

- (2) 7000 lb E-Z lube axles
- Sealed wiring harness
- 96" Slide in rear ramps
- I-beam main frame
- 3" Channel cross members on 16" centers
- 12,000 lb Drop-leg jack
- Rub rail and stake pockets / LED lights
- 235/80R16 Tires
- Grey 8-bolt rims
- Starting @ **\$7,650**



Rules Of The Road

For light industrial trailers in Canada



Travelling between provinces with your trailer?

Flaman Trailers has grown to become North America's largest trailer retailer. We have stores in three provinces and provide product that travels even further. This growth is in part due to, and brings with it, taking responsibility to be aware of the various provincial regulations regarding trailers. So, Flaman Trailers' VP, Steve Whittington, created a "Rules of the Road" presentation to address these issues. This presentation was first conducted at NATDA (North American Trailer Dealers Association) in 2012 and has been updated to 2016 regulations.

DID YOU KNOW?

Different provinces have different regulations on almost everything from annual inspections, to dimensions and brake requirements. Violating a regulation could result in a ticket. This means that you may be legally pulling your trailer in SK, but the moment you hit AB or MB you are at risk of getting fined for doing exactly what you were doing 1 minute earlier in the other province.



The differences in provincial regulations and what you need to know to avoid a ticket are all summarized in Flaman's "Rules of the Road" article. You can download it for free at flamantrailers.com/RulesOfTheRoad.

"Rules of the Road" is a summary intended for informational purposes only and not a legal document. Please check with transport Canada for legal guidelines and laws.

Industrial Equipment Trailers

DIAMOND C FMAX210 Tandem Dual Flat Deck Goosenecks

Available sway control
Available low pro option
5' beavertail with spring-assisted max ramps

Model	Axles	Length	Starting@
FMAX 210	(2) 10,000 lb	30'	\$14,995
FMAX 210	(2) 10,000 lb	32'	\$15,500
FMAX 212	(2) 12,000 lb	32'	\$19,995



PRICING STARTING @ **\$14,995**



Lifts up to
10,000 lbs!

DIAMOND C FMAX 210 HDT Hydraulic Tail

(2) 10,000 lb axles
Spring suspension
Various deck lengths available
9' Powertail
16" Dual wheels
LED lights
Remote control
36" Tool box

PRICING STARTING @ **\$19,500**

**Never manually
lower ramps again!**

*This 9' hydraulic beavertail
can lift 10,000 lbs.*

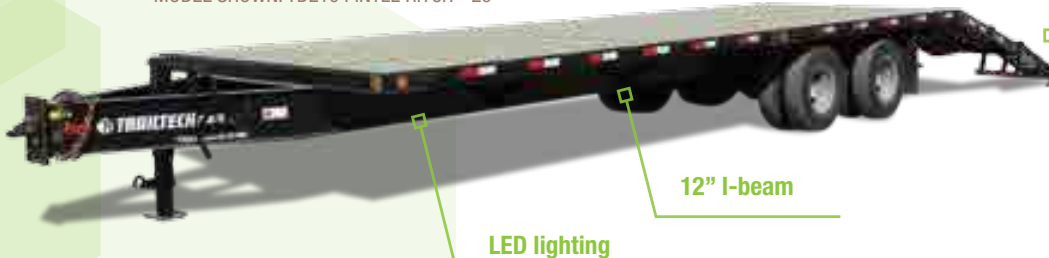


TRAILTECH TD210

Pintle Hitch - 26'

(2) 10,000 lb dual axles
Beavertail with double pivot
tech ramps
26' Length + beavertail
5534 lb Curb weight
Starting @ **\$15,500**

MODEL SHOWN: TD210 PINTLE HITCH - 26'



TRAILTECH TD210 Gooseneck Highboy

26' Deck + 5' beavertail

(2) 10,000 lb Axles
2 5/16 Gooseneck
Angle iron beavertail
Optional aluminum rims



PRICING STARTING @ **\$16,995**

NEW optional full width Tech ramps on all H370 and TD models

Model	Axles	Length	Starting@
TD 210	(2) 10,000 lb	24'	\$16,500
TD 210	(2) 10,000 lb	26'	\$16,995
TD 212	(2) 12,000 lb	26'	\$19,500



PRICING STARTING @ **\$14,995**

TRAILTECH H370GN Gooseneck Highboy

24' Deck plus 5' beavertail tech ramps
(3) 7,000 lb Torsion axles
Electric braking
Curb weight: 5335 lb

TRAILTECH H370

Pintle Hitch - 26'

(3) 7000 lb Torsion axles
24' deck + 5' beavertail with
tech ramps
Spring assist ramps
Angle iron beavertail
Starting @ **\$13,995**

MODEL SHOWN: TRAILTECH PINTLE HITCH H370



Big Trailers for Big jobs!

MODEL SHOWN: TD320



TRAILTECH TD320 PH

Pintle Hitch

28' Deck + 5' beavertail
 (3) 20,000 lb axles
 3 Air braking w/ABS and dual wheels
 41" Deck height
 Curb weight: 11,800 lbs
 Starting @ **\$37,995**

TRAILTECH TD220 PH

Pintle Hitch

26' Deck + 5' beavertail
 (2) 20,000 lb axles
 Dual air braking w/ABS
 41" Deck height
 Curb weight: 9,127 lb
 Starting @ **\$23,995**



BEHNKE

Pintle Equipment Trailer

28' Bed; 6' beavertail
 (3) 25,000 lb Axles
 25,000 Air ride suspension axles
 Oak decking
 Mega ramps
 Starting @ **\$41,995**



Available oak decking

Winch-rail with sliding winches

PODCAST

"We make sure it is going to last...there is a big need for high quality trailers... there is so much specialized needs..."

Jim Behnke, B-B Trailers

VISIT FLAMANTRAILERS.COM/BLOG

BEHNKE

Step Deck Semi Trailer

53' Air ride step deck
(3) 25,000 lb axles

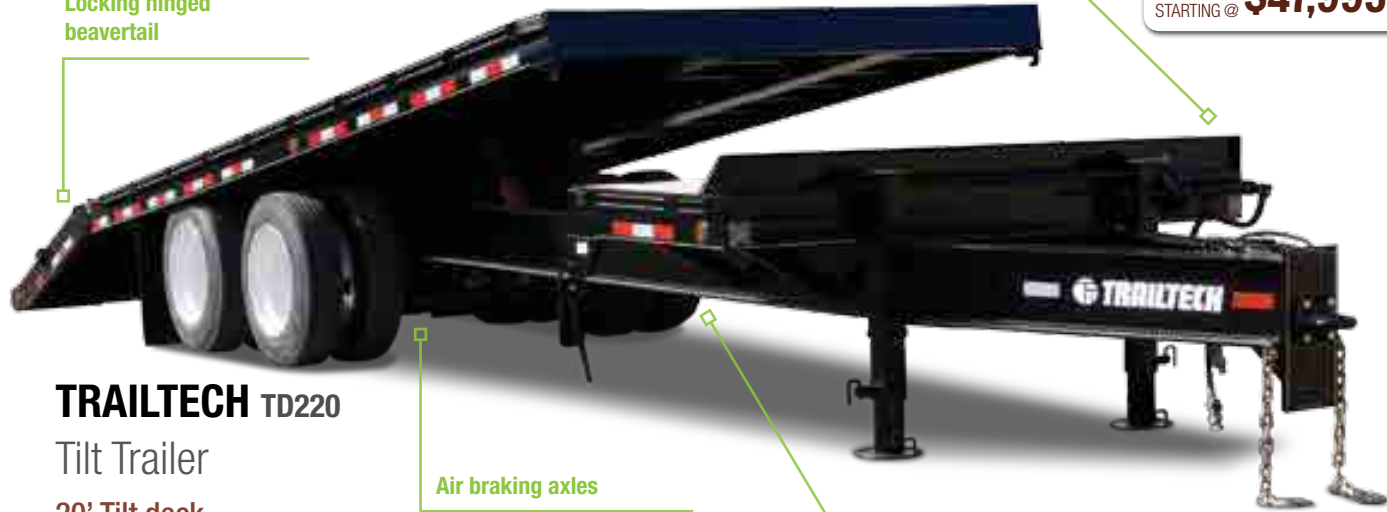
11' Upper deck; 36' lower deck; 6' beavertail & ramp
Rubrail

Winch rail with sliding winches

BUMP STOP

PRICING STARTING @ **\$47,995**

Locking hinged beavertail



TRAILTECH TD220

Tilt Trailer

20' Tilt deck
4' Stationary deck
6' Hinged, lockable beavertail
(2) 20,000 lb axles

Air braking axles

Valves

MODEL SHOWN: TD220 TILT

PRICING STARTING @ **\$32,995**

Hydraulic Flatdecks

Power tilts make loading and unloading your equipment easy.

1

Highboy Flat Deck



MODEL SHOWN: TD210 TILT GOOSENECK

Highboy Tilt Deck

2



MODEL SHOWN: TD210 TILT GOOSENECK



MODEL SHOWN: L370T-24 TILT

TRAILTECH L370-24

Tilt

- 24' Full tilt
- 3' Checkerplated hinged beavertail
- (3) 7000 lb Axles
- Starting @ **\$14,500**

TRAILTECH TD210

Tilt Pintle

- 24' Power tilting deck
- 3' Hinged checkplated beavertail
- (2) 10,000 lb Axles
- Starting @ **\$17,995**

TRAILTECH TD210

Tilt Gooseneck

- 24' Power tilting deck
- 3' Hinged checkplated beavertail
- (2) 10,000 lb Axles
- Starting @ **\$18,995**

Model	Axles	Deck	Dovetail	Suspension	Hitch	Starts@
MD270 PH	(2) 7,000 lb	20'	2'	Torflex	Pintle	\$13,750

Multi-Deck Get 4 Trailers in 1!



THE BENEFITS OF A MULTI-DECK
VISIT FLAMANTRAILERS.COM/BLOG

The Multi-Deck can be a lowboy, or a highboy and has a powered tilt in both positions. Choose from a variety of lengths or a gooseneck option.

Limited Quantity Available!



Lowboy Tilt Deck

Highboy Tilt Deck

Lowboy Flat Deck

Highboy Flat Deck

1



2



3



4



Big Trailers for Big jobs!

BEHNKE

Low Bed Semi-Trailer

- Non-ground detach neck
- 25,000 lb Axles with air ride suspension
- 22" Front loading ramps
- 24" Loaded deck height
- Extra flip axle available
- Oak decking
- Slide outs and flips out available
- Powder coated



70,000- 110,000 GVWR Range

Industry leader sprayer trailers

BEHNKE

Sprayer Trailer

- (3) 25,000 lb Air brake axles, 255/70R
- 22.5 Tires, air ride suspension
- Bead blasted then powder coated
- Flip up side running boards
- LED & strobe lights
- 13' Upper deck
- Removable front wheel chocks
- Under-slung storage hangers
- Treated wood deck



Ag Transport

MERIDIAN

Fuel Express Trailer

40 GPM gas engine pump
 Available in tandem or triple axle
 Optional rear capacity: utility box; heavy duty tool box;
 3 in 1 Welder, generator and compressor



**NEW
PRODUCT**



NEW! MERIDIAN FX 430

Fuel Trailer

The new FX430 is a smaller low cost unit that is ideal for the smaller farmer, rancher, cottage owner or snow removal companies.

Bale Carts

TRAILTECH

7000 lb Axle
 Optional electric brakes & 3" lunette eye hitch
 Accommodate swathers w/ up to 36' header
 Starting @ **\$5,295**



RITE WAY

Move 1000 Bales / Day
 Frame made of 8 x 4 steel
 (4) 20" Custom designed HD hydraulics
 Comes with steel twine guards to protect wheel bearings from bale twine

Header Transports

J&M

Adjustable to fit larger headers and platforms
 4-Wheel steering for sharper turning
 Designed for maximum support
CALL FOR PRICING



TRAILTECH

7000 lb Torflex axle
 4 Adjustable header arms will haul flex or draper headers
 For all rigid, flex & draper headers
 Can accommodate up to 36' header
 Starting @ **\$5,195**

Horse & Stock



FRONTIER

Stock Trailers

6'6" Tall, 7' wide, torsion axles

Extruded flooring and walls on select models

Starting @ **\$12,750** 16' Bumper Pull 3500 lb axles

Starting @ **\$24,995** 24' Gooseneck 7000 lb axles



FRONTIER

Horse Trailers

Standard models for 2 and 3 horse, custom options for 4 horse available

Starting @ **\$14,750** 2 Horse Colt LS 2H (2) 3500 lb axles

Starting @ **\$20,395** 3 Horse Strider I Slant Load (2) 3500 lb axles

Starting @ **\$26,495** 3 Horse Strider I Slant Load GN (2) 5200 lb axles



NORBERTS MFG.

16' Bumper Pull Stock Trailer

7' Wide 82" Height / Center gate

(2) 7000 lb Axles

Starting @ **\$14,250**



NORBERTS MFG.

20' Gooseneck Stock Trailer

7.5' Wide 82" Height / Two center gates

(2) 7000 lb Axles

Starting @ **\$19,500**



NEW! TRAVALUM

16' Bumper Hitch Stock Trailer

6' 8" Inside width / 6' 8" Height / Rubber floor

mats / Divider gate / Easily tows with 1/2 ton

Starting @ **\$16,250**



NEW! TRAVALUM

Gooseneck Stock Trailers

34" Side access door / Rubber floor mats

Extra large storage area in neck / Divider gate

20' Starting @ **\$22,250** / 24' Starting @ **\$29,895** / 28' Starting @ **\$32,995**

Concession & Refrigerator

CONCESSION UNITS

All Units Are Fully Customizable

Available in 12' to 32' lengths.

Options:

Interior /exterior counters
Lighting
Signage

Shelving
Bally cloth
Windows



CUSTOM ORDER ONLY

MOBILE RESTROOM

Winterization Package Available

Each restroom unit is self contained and easy to set up.

Options:

Fresh water system
5 gal heater

Lockable base cabinet

Fold down ATP steps with aluminum

Soap dispenser

Paper towel dispenser



MODEL SHOWN: 5 UNIT MOBILE RESTROOM, CALL FOR PRICING



CUSTOM ORDER ONLY

ARTIK 2000U TRAILER REFRIGERATION

Specifically Developed For Trailers

Plug & play installation in less than 60 minutes

Trailer sizes from 6 x 10 to 7 x 16

R valve recommended for trailer

R25 (4" insulation)

We build customer refrigeration trailers!

-12°C to +10°C Refrigeration Range*

*Depending on size of trailer



\$8,995*

*REFRIGERATION UNIT
Insulated trailer sold separately
Please call for details

**FLAMAN
ADVANTAGE**

Installation Available

This versatile trailer acts as a ground level loading trailer, a utility trailer, and a dump trailer all wrapped into one, hard working vehicle.



These trailers lower flat onto the ground for fast & easy. You can even drive a forklift right into the trailer!

AIR TOW

Level Loading Trailers

Make Loading & Unloading a Breeze



AIR TOW TRAILERS
VISIT FLAMANTRAILERS.COM/VIDEO



AIR TOW - PODCAST
VISIT FLAMANTRAILERS.COM/BLOG

Model	Size	Axles	Deck	Suspension	Starts@
RS8-35	8'6" x 4'6"	(1) 3500 lb	Flatbed	Rubber	\$9,450
S10-55	10' x 6'3"	(1) 5500 lb	Flatbed	Air	\$12,495
US10-55	10' x 6'3"	(1) 5500 lb	Utility box	Air	\$12,850
T14-10	14' x 6'3"	(2) 5000 lb	Flatbed	Air	\$18,250
RT14-12	14' x 6'3"	(2) 6000 lb	Flatbed	Rubber	\$20,750

JOB SHACK

Do You Need On Site Space For Your Crew?

ATC job shack trailers are an efficient solution to your job-site needs.

Lunch room, meeting room and/or workspace with a desk or table. They can be heated/insulated and have air conditioning for year-round use.

Options:

- Torflex axles
- Partition wall with door
- Benches
- Table
- Front air conditioning
- Heated
- 110v Service
- 30 or 50 Amp
- Built in generator

Custom built to your needs!



CUSTOM ORDER ONLY



Enclosed Trailers



MODEL SHOWN: LT SERIES 7'X14

CARGO BOX	AXLE	STARTS@	CAPACITY
5' x 10' Lightning	(1) 2900 lb	\$3,750	1950 lbs
6' x 12' Lightning	(1) 2900 lb	\$4,850	1760 lbs
6' x 12' Lightning	(2) 3500 lb	\$5,850	5350 lbs
7' x 14' Lightning	(2) 3500 lb	\$6,850	4850 lbs
8' x 16' Lightning	(2) 3500 lb	\$8,450	5250 lbs

*All pricing starting for barn door models.
15" steel spare tire starts@ \$149*

Work or Play! We can help you find the perfect trailer.



XR MODEL SHOWN WITH 48" CHECKER PLATE FRONT

CARGO BOX	AXLE	STARTS@	CAPACITY
6' x 14' XR Cargo	(2) 3500 lb	\$7,995	5725 lbs
7' x 16' XR Cargo	(2) 3500 lb	\$9,550	4580 lbs
7' x 16' XR Cargo SPORT RD	(2) 3500 lb	\$10,750	4500 lbs
7' x 18' XR Cargo	(2) 3500 lb	\$10,350	4500 lbs
8' x 18' XR Cargo	(2) 6000 lb	\$12,750	9000 lbs
8' x 22' XR Cargo	(2) 5200 lb	\$14,750	8700 lbs

*All pricing starting for barn door models.
Length includes 2' of V-nose for XR Series*



**NEW
PRODUCT**

CARGO BOX	AXLE	STARTS@
6' x 10' Scout	(1) 3500 lb	\$4,995
6' x 12' Scout	(2) 3500 lb	\$6,650
7' x 14' Scout	(2) 3500 lb	\$7,995
7' x 16' Scout	(2) 3500 lb	\$8,650
7' x 16' Scout Sport	(2) 3500 lb	\$8,995
8' x 16' Scout	(2) 5200 lb	\$10,595
8' x 20' Scout RD	(2) 5200 lb	\$12,995
8' x 24' Scout RD	(2) 5200 lb	\$14,250

MODEL SHOWN: BRAVO SERIES 6'X12'



ROYAL

LT Series Cargo

HSS structural tubing - main frames
030 Rivet-less aluminum exterior
3/8" Plywood - interior walls
5/8" Plywood - floor
Aluminum molding top / bottom
Galvanized hardware

Enclosed wiring
Rubber mounted lighting
12" Checker-plate front
Rivet-less smooth sides
Aluminum fenders
Drop spring axles



MODEL SHOWN:
LT SERIES 6'X12'

XR SERIES

Cargo

A Trailer That Gets The Job Done

HSS structural tubing - main frames
HSS structural tubing uprights
Rivet-less aluminum exterior
Exterior bonded with "VHB" two sided tape
Aluminum rims

LED tail lights
24" Checker plate front
Torsion axles
Various colours available



MODEL SHOWN:
7'X16' SPORT,
86" TALL

NEW! BRAVO

Scout Cargo

A Trailer That Is Work Ready

.030 thick aluminum skin
16" o.c. wall posts
3/4" plywood floor (8.5'w)
3/4" drymax floor (5, 6, & 7'w)
3/8" interior sidewalls

Protected wiring
Side door
Sidewall vents
Clear LED interior & exterior lighting



MODEL SHOWN:
BRAVO SERIES 7'X14'

Industrial Heavy Duty

Royal Cargo when you need the strongest trailer on the market

ROYAL CARGO

- 16" Crossmembers
- HSS Structural tubing – main frame
- HSS Structural tubing uprights
- Rivet less pre-painted enamel
- Aluminum exterior
- 3/8" Plywood interior walls
- 3/4" Mezzanine plywood floor
- 30" Wide side door
- Enclosed wiring
- LED lights
- Spring assisted ramp
- Interior lights c/w switch
- 30" Checkerplated front
- 1 Piece aluminum roof
- Aluminum fenders
- Torsion axle



MODEL SHOWN:
ENCLOSED 8 X 20 \$14,995

Enclosed 8' x 20'
(2) 6000 lb Torsion axles
Rubber ride electric brake axles
Automotive quality undercoat
Curb weight 3300 lbs
One piece roof
Starting @ **\$14,995**



MODEL SHOWN:
24' GOOSENECK \$22,995

Gooseneck 8' x 24'
(2) 7000 lb Torsion axles
79" Interior height
Automotive undercoating
Curb weight 4390 lbs
All tubing frame
Starting @ **\$22,995**

Gooseneck 24' Tri Axle

- (3) 7000 lb Torsion axles
- Interior height: 85"
- Interior width: 8'
- Electric brakes
- Starting @ **\$25,500**



MODEL SHOWN:
24' TRI AXLE GOOSENECK \$25,500

CARGO BOX	AXLE	STARTS@
6' x 12'	(2) 3500 lb	\$9,995
7' x 14'	(2) 3500 lb	\$10,500
7' x 16'	(2) 3500 lb	\$11,250
7' x 16'	(2) 6000 lb	\$12,500
8' x 16'	(2) 3500 lb	\$12,995
8' x 16'	(2) 6000 lb	\$13,995
8' x 20'	(2) 6000 lb	\$14,995
8' x 20'	(2) 7000 lb	\$15,500
8' x 20' GN	(2) 7000 lb	\$21,995
8' x 24' GN RD	(2) 7000 lb	\$22,995
8' x 24' GN RD	(3) 7000 lb	\$25,500

All pricing starting for barn door models unless specified by RD

Enclosed Aluminum Cargo



HIGH COUNTRY EXPRESS MODEL SHOWN WITH OPTIONAL ALUM RIMS AND TRIM PACKAGE NOT INCLUDED IN PRICING

HIGH COUNTRY EXPRESS

EZEC 7 x 16 CNTR Ultimate Contractor

- All aluminum construction
 - 36" V-nose
 - Advantech decking
 - (2) 3K spring axles
 - 6' 10" Interior height
 - Side man door & barn doors
 - (4) Heavy duty D-ring
 - 16" Catwalk w/ (4) ladder racks & ladder
- CALL FOR PRICNG**

HIGH COUNTRY EXPRESS

7 x 14 Cargo

- All aluminum construction
- 36" V-nose
- Advantech decking
- (2) 3K torsion axles
- Barn door
- 6' 7" Interior height
- Side man door
- (2) Dome lights

NEW
PRODUCT

PRICING STARTING @ **\$10,500**



ALUMA

Motorcycle Cargo Trailer

- Tow easily behind a motorcycle!
- 45" Wide x 85" long
- Gas shocks on lid for a tight seal
- Fold down Stand
- 600 lb Axle
- MCT Starts @ **\$2,850**
- MCTXL Starts @ **\$3,250**



ALUMA

Car Cargo Trailer AE46

- 64" W x 120" L
- 1200 lb axle
- Lockable lid
- Over-lapping lip
- Size: 4'x6'
- Luggage rack on lid
- Starts @ **\$3,750**

Recreational Trailers



SUMMIT SERIES

HAFS8520TA2 HAFS8524TA2

Sled Trailer

A Dressed Up Trailer At An Entry Level Price

Roof vents

Treated deck

White walls & ceiling

Cabinet and garment Rack

3 place HAFS8520TA2 Starting @ **\$11,995**

3 place heated/insulated **\$14,995**

4 place HAFS8524TA2 Starting @ **\$12,995**

4 place heated/insulated **\$16,995**

SUMMIT SERIES

WLFST719TA2 WLFST723TA2

Sled Trailer

Stylish white walls

Flip over extension on ramp

Overhead cabinet to store your gear

15" aluminum rims

Smooth side exterior

Convenient fuel door

WLFST719TA2 Starting @ **\$10,995**

**Narrow design makes it easy to tow.
Low deck makes for easy loading.**

MODEL	#OF SLEDS	LENGTH	WIDTH	HEIGHT	AXLES
WLFST719TA2 7' Wide Inline	2	19' (14' + 5' v-nose)	7'	7'	(2) 3500 lb Spring
WLFST723TA2 7' Wide Inline	3	23' (18' + 5' v-nose)	7'	7'	(2) 3500 lb Spring



MODEL SHOWN:
7'X 22' 3 PLACE

XR

XRARSMT35-722-86

7' Wide Inline Sled Trailer

All aluminum interior

Mez deck flooring

86" Interior height

Starting @ **\$15,500**



XR

XRARSMT35-826-78 XRARSMT35-820-78

8' Wide Standard Highboy

All aluminum interior

Mez deck flooring

2-3500lb Axle

3 Place (16' + 4' v-nose) Starting @ **\$13,500**

4 Place (22' + 4' v-nose) Starting @ **\$13,995**

Recreational Trailers

HIGH COUNTRY

All-Sport Sled Trailer

Built For The Power Sport Enthusiast

- Side access doors
- Lighting packages
- Extra height & extra length
- Interior wall upgrade
- Flooring upgrades
- Aluminum heel upgrade
- Fuel doors
- Cabinet packages
- Ski guides
- Track mats
- Furnace packages
- Boot/glove dryers



WEB
BLOG

Want some advice on what to look for in an All-sport trailer?
READ THE ALL-SPORT BLOG
VISIT FLAMANTRAILERS.COM/BLOG



FURNACE

BOOT/GLOVE DRYERS

*All pricing valid for 2016/2017
instock models only*

Limited Quantity - Visit flaman.com/clearance to see available models

MODEL

HCH 8.5 X 22

HCH 8.5 X 24

PRICE

Starting@ \$25,500

Starting@ \$27,500

With Heating Package

\$32,500

\$36,995

ALUMA

Open Sled Trailer

2,200 lb. Axle
2 Place



TRAILTECH

Open Sled Trailer

- HSS Steel tubing frame
- 3500 lb Axle
- Reversible slide-out ramp
- Rub rail and stake pockets
- LED lights
- 3/4" Treated decking



MODEL		STARTS@
8610D	10' + 2' v-nose	\$2,795
8612D	12' + 2' v-nose	\$4,395

MODEL		STARTS@
SM2 - 2 place	10' + 2' v-nose	\$3,350
SM3 - 3 place	14' + 2' v-nose	\$3,995
SM4 - 4 place	20' + 2' v-nose	\$4,995

Car Haulers



Custom Order Only

SUMMIT SERIES

Car Hauler

Great value to keep your vehicle protected

- 15" Tires
- Roof vent
- Stone guard
- 48" Side cargo door
- Smooth wall exterior
- Optional 54" escape door



MODEL	AXLES	STARTS@
24' x 8.5'	(2) 5200 lb	\$12,500

SOUTHLAND LB16T-7

- 16' Car Hauler
- (2) 3500 lb Axles
- 16' Deck & 82" deck width
- Starting @ **\$4,250**



ATC OCHAB8518

Aluminum Car Hauler



BED SIZE	AXLES	PRICE
8.5" w x 18' L	(2) 3500 lb Torsion	\$7,850
8.5" w x 20' L	(2) 5200 lb Torsion	\$9,995

CAR STACKERS Choose from many customizable options!

- 20' - 34' Lengths available
- Choose 6K, 7K, 8K lb axles
- Custom cabinets
- 30 Amp power service
- Custom flooring options
- Customizable interior lighting
- Aluminum or steel construction

CALL FOR PRICING

Car Haulers



QUEST ATC

Car Hauler

Standard Package Includes:

- Full perimeter frame
- Torsion axles
- 14" Roof vent
- In floor spare tire compartment
- 6" Rear spoiler with LED lights
- 7' Interior height
- Black coin rubber floor
- Aluminum wheels
- Custom cabinets
- Insulated walls and ceiling
- Screwless walls and ceiling

CALL FOR PRICING

Customizable Options Include:

- 16'- 53' Lengths available
- Choose 3.5K, 5.2K, 6K, 7K, 8K lb axles
- Preconfigured quest packages 205, 305, 405
- 30, 50 or 100 amp power service
- Various flooring options
- Premium escape door (as shown)
- Aluminum or steel construction

CALL FOR PRICING



RAVEN

All Aluminum Car Hauler

Standard Package Includes:

- Full perimeter aluminum frame
- All tube walls & ceiling
- Beavertail
- 3/4" Advantech sub floor
- 3/8" Plywood walls
- Brushed aluminum cast corners
- Stainless steel vertical and top radius
- 36" Side door
- Screwless exterior
- 24" ATP stoneguard with J-rail
- LED clearance and brake lights

Starting @ **\$15,995**

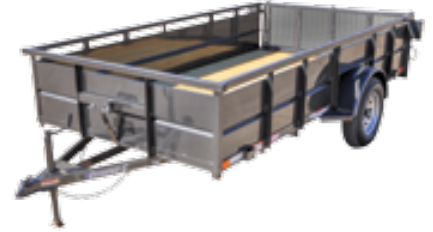


ESCAPE DOOR OPTION

Utility Trailers



Optional Tool Box



TRAILTECH L-135T

12' Deck length
79.5" Between fenders
(1) 3500 lb Idler axle
Starting @ **\$3,550**

DIAMOND C OPEN UTILITY 33UVT

3500 lb E-Z lube idler axle
4" Channel frame
2000 lbs Flip jack, bulldog coupler
Rub rail and stake pockets
12 x 77 Starts @ **\$2,750**

HIGH SOLID SIDE UTILITY 3RBT

3500 lb Axle
24" Sides lined w/ solid steel panels
Wood deck
48" Bi-fold ramp gate
5' x 10' Starts @ **\$3,250**



5' X 8' LIGHT UTILITY RLR

2,000 lb Spring suspension axle
Expanded metal floor
Flat folding gate
13" Tires
Starts @ **\$1,750**



MEDIUM DUTY UTILITY RSA

2" Pine plank floor
Flat folding gate
3,500 lb Spring suspension axle
5' x 10' **\$1,995**
6' x 12' **\$2,350**
6' x 14' **\$2,450**



HEAVY DUTY UTILITY 2PSA w/ ATV Package

6' W x 12' L
Top wind jack
3500 lb EZ-lube axle
Starts @ **\$2,995**



TRAILTECH UTILITY BT135-4X8

3500 Lb Axle
1" Structural tubing
15" Tires
24" Sides
Shown with optional 48" ramp
Starts @ **\$2,995**



TRAILTECH UTILITY UT510/610

1 1/2" Structural Tubing
3500lb Axle
15" Tires
Tilt
510 - **\$3,150** / 610 - **\$3,350**



TOW DOLLIES

Carrying pan steers for your car
Easy Lube hubs
Electric or surge brakes available
Towed vehicle tread width 40" - 80"
Cargo capacity 3000-3500 lb
EB - **\$2,550** / SB- **\$2,995**

Utility Trailers

ATC OPEN UTILITY

- 2" x 5" Main rails
- 15" Tires
- 2900 lb Torsion axle
- Removable ramp
- OUTA510 5 x 10 - **\$3,150**
- OUTA610 6 x 10 - **\$3,350**
- OUTA612 6 x 12 - **\$3,550**



MODEL 548

- 54" W x 96" L & Bi-fold gate
- All alum. frame & floor
- Alum. fenders w/vinyl gravel guard
- Starts @ **\$2,595**

MODEL 6310H

- 3000 lb Rubber torsion axle
- Alum. frame & floor
- Alum. tailgate
- 63" W x 120" L
- Starts @ **\$3,495**

MODEL 7712H

- 3000 lb Torsion Axle
- Front retaining rail
- Alum. tailgate
- 72" W x 144" L
- Starts @ **\$4,395**



MODEL 8114 - 14'

- Alum. frame & floor
- Bed size: 81" w x 145" L
- Alum. fenders w/guard
- 3000 lb Rubber torsion axle
- Starts @ **\$4,395**
- Model 8812 - 12' **\$3,795**

MODEL UT - 12'

- 3,000 lb Torsion axle
- Curb weight: 760 lb
- Bed size: 71" w x 150" L & 57" Ramp
- 24" Alum. shield w/ storage box
- Starts @ **\$4,750**
- UVT - 10' **\$4,650**

BERGEN BOSS' BEST FRIEND (Tandem Axle)

- (2)2000 lb Axles
- 14 Gauge sheet metal
- Tailgate included
- Starts @ **\$2,150**

TIRES & HITCHES



225/75 R15 Tire
ON A 5 BOLT SPOKE RIM
\$240³⁵ PTW344280



205/75 R15 Tire
ON A 5 BOLT ALUM. RIM
\$322 PTW344356



235/80 R16 Tire
ON A 6 BOLT MOD RIM
\$245 PTW344676

235/80 R16 Tire
ON A 8 BOLT SPOKE RIM
\$245 PTW344688

235/80 R16 Tire
ON A 8 BOLT MOD RIM
\$245 PTW344705

235/80 R16 Tire
ON A 6 BOLT SPOKE RIM
\$245 PTW344657



175/80 R13 Tire
ON A 5 BOLT SPOKE RIM
\$159 PTW344053



175/80 R13 Tire
ON A 5 BOLT ALUM. RIM
\$285 PTW344055



205/75 R14 Tire
ON A 5 BOLT SPOKE RIM
\$233 PTW344089



205/75 R14 Tire
ON A 5 BOLT ALUM. RIM
\$317 PTW344075



TORFLEX AXLES
Reduces vibration and dampens bumps.
From 2,000 lb capacity
Starting@ **\$415**



SPRING AXLES
Cost efficient and easy to replace.
From 2,000 lb capacity
Starting@ **\$200**



HD AXLES
Heavy duty axles for those heavy loads.
7,000 lb - 27,500 lb capacity
Starting@ **\$615**



SUSPENSION PARTS
We carry a full line of suspension parts: shackles, springs and more.



BEARING KITS
Keep your trailer running smoothly with preventative maintenance.
2,000 – 7,000 lb capacity



BRAKE ASSEMBLIES
Save time and money with a complete brake assembly.
2,000 – 10,000 lb capacity



BRAKES & HUBS
2,000 to 10,000 capacity, for all makes and models of trailers.
Hub assembly starts@ **\$38**



COUPLERS
Huge selection of couplers, various types.
Starting@ **\$49**

TRAILTECH

Industrial Truck Decks

Truck Deck For Work Or Play

Rectangular tubing construction

Formed headache rack c/w louvered cab guard

Recessed gooseneck hitch plate comes with hinged cover

LED lighting with recessed rubber mounting

Available w/recessed ball or flip over 5th wheel

Treated wood deck



HOW TO MEASURE FOR A CUSTOM DECK

Back of cab to back of frame

Back of cab to center of axle

Dual or standard wheel axle and sill width
(outside of frame) 34" or 42"

WITHOUT OPTIONS & INSTALL

8' 6" L x 7' 6" W	Starting@ \$3,250
8' 6" L x 8' W	Starting@ \$3,450
9' L x 8' W	Starting@ \$3,650
11' L x 8' W	Starting@ \$3,850
18' L x 8' 6" W	Starting@ \$4,750
22' L x 8' 6" W	Starting@ \$5,150
24' L x 8' 6" W	Starting@ \$5,450

AXLES, BRAKES & HUBS



REESE
Gooseneck Hitch Pro Series

OFFSET BALL

25,000 lb **\$249**

PTT249080



REESE
5th Wheel Hitch

DOUBLE PIVOT, INCLUDES RAIL KIT

15,000 lb **\$529**

PTT230128

20,000 lb **\$1,078**

PTT230132



REESE
Gooseneck Hitch

REPLACEABLE BALL

25,000 lb **\$329**

PTT258079



Balls & Ball Mounts

CONVENIENT VERSATILE SYSTEM



REESE
Quick Slide 5th Wheel Hitch

DOUBLE PIVOT, INCLUDES RAIL KIT

15,000 lb **\$858** PTT230129

20,000 lb **\$1303** PTT230133



Auto Slide 5th Wheel Hitch

AUTOMATICALLY MOVES BACK AS YOU TURN

15,000 lb **\$1,495**

PTT230215



ATWOOD
Folding Ball

FOLDABLE FOR A SMOOTH DECK

15,000 lb **\$230**

PTT214600



ATWOOD
RAPID HITCH

ADJUST THE HEIGHT OF YOUR HITCH EFFORTLESSLY

Starts @ **\$285**

TRAILER ACCESSORIES



ROCK GUARD

\$460 PTM540058



Doubles as a ramp for unloading.

SALT SHIELD

Protect your sled or quad.

\$795 PTM541067



QUICK DISCONNECT TIE DOWN ANCHOR

Mounts on a flat surface, 4000 lb straight pull strength. PTF512869 blue / PTF522869 black PTF532869 silver / PTF502869 red

\$11 each



COUPLER LOCK

Keep your trailer safe from theft. Will fit 1 7/8", 2" and 2 5/16" couplers.

\$67.36 PTJ290200



WHEEL CHOCK

For transporting a motorbike safely in a trailer. Comes with all hardware

\$41 PTF511017



WHEEL LOCK

Lock your wheel to prevent theft. It's security for: trailers, cars, trucks and boats.

\$116 PTJ290901

TIE DOWN HANGERS

JUNIOR

Set of 2 - conveniently hang tie downs at the front & back of your trailer. 8.5"L x 3"W x 3"H

\$29.95 PTF500442

SENIOR

Keep all your tie downs together in one place. 17"L x 3"W x 3"H

\$33.19 PTF500465

BROOM HANGER

Keep your broom out of the way! Also comes in silver.

\$21 PTF500607



D-RINGS

Various types of D-rings available, such as swivel, recessed or weld-on.

Starts@ \$9.26 PTM404605



AIRLINE TRACK

Perfect for hauling motorcycles. Low profile so it stays clean and easy to use.

\$69.95 PTF500004



SUPER CLAMP TIE DOWN

A more versatile way to lock your skis down during transport. Quick, easy and secure.

\$199.95 PTF899100



E-TRACK

Makes a great adjustable hook up point. Gives you more options for tie downs.

\$30.88 for 10' PTM398100



STAKE POCKET STEP

Easy to remove & install

Starts@ \$59.99 PTM401005



STAKE POCKET SPARE MOUNT

Easy to remove & install

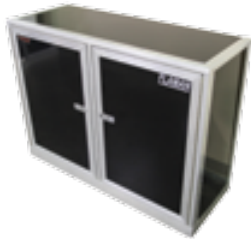
Starts@ \$59.99 PTM401004



BOLT ON STEP

Bolts on to any trailer 36" wide / available in black

Starts@ \$59.99 PTM401018



BASE CABINET

Comes in many colours
40" H, 4' W, 18" D

\$1,065 PTF577270



WALL MOUNT CABINET

Comes in many colours, wall
mount, 18" H, 4' W, 16" D

\$575 PTF577284



Create a custom mobile storage solution

WESTCAN MOBILE STORAGE SOLUTIONS

Create a custom mobile storage solution
Trade packages for 12' or 14' long trailers
& cube vans.

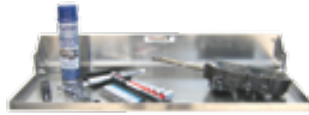


HELMET HOOKS

Holds your helmets out of the
way. Also comes in black.

Single 2.5"H x 2.5"W x 6"D

\$19 PTF500282

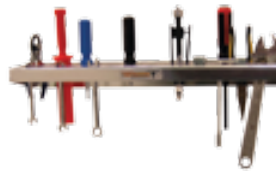


FLIP OUT WORK TRAY

A great work bench for your
trailer. Silver or black.

32"W x 14"D

\$82 PTF500609



TOOL ORGANIZER

Multiple custom slots keep
all of your tools handy!

Also comes in black.

2.5"H x 24"W x 6"D

\$44 PTF502670



ALL PURPOSE SHELF

For storing your cans and oils.
Comes with notches to hold
tools. Silver or black.

30"L x 5"W x 4"H

\$44 PTF500456



GRIP GLIDES

Get extra grip when loading
your sleds. The small pieces
can make a track around a
corner.

\$80 for 32 pieces PTF613351



EDGE GLIDES

Attach these to the bottom of
the ramp door for a smooth
transition from the ground to
the ramp.

\$89.95 for 4 pieces PTF613361



LOW PRO GRIP GLIDES

Get extra traction and help keep
your snowmobile straight when
loading.

\$100 for 8 pieces PTF613326
(20' total)



SUPER GLIDES

Protect the trailer deck from
ski carbides and guide your
sled when loading.

\$114.95 for 20' PTF899105



LIGHTS

All makes and models

Starting@ **\$1.40**



**INCANDESCENT
AND LED LIGHTS**

Low power and high efficiency

Starting@ **\$2.99**



FLIP OUT LIGHT

Plugs into any 110 volt outlet.
Extends out 44" and folds back
when not in use.

\$50 PTF500490



LOAD LEVELLER

Transfers weight off the tongue
& stabilizes the trailer..8K & 1K

\$429 PTT249902

TRAILER ACCESSORIES

FLAMAN

RENTALS



Looking to expand your business?
JOIN OUR TEAM!

BECOME A FLAMAN RENTAL DEALER

Join our growing team of rental dealers in Western Canada.

You can expect a supportive network of like-minded business people to help you grow your business and be successful.

Last year we rented equipment to over **40,000 customers** in farming, oilfield, construction and more.

Investment in equipment is required. Proudly serving Western Canada since 1959.

Contact Carter Flaman
1.877.229.1331



RENT ME

14' DUMP SHOWN
10' - 16' SIZES AVAILABLE

DUMP TRAILER RENTALS

- 10' Models Start@ \$100/day
- 12' Models Start@ \$125/day
- 14' Models Start@ \$135/day
- 16' Models Start@ \$175/day

Need to haul dirt, snow or debris?

The two-way tailgate features a rear double door and spreader gate, allowing for fast, controlled unloading. Rent one of our 10', 12', 14' or 16' tandem axle dump trailers today.



RENT ME

24' GOOSENECK FLATDECK SHOWN
20' - 30' SIZES AVAILABLE

GOOSENECK FLATDECK TRAILER RENTALS

24' Models Start@ \$125/day

These trailers are great for general farm, hotshot or long haul trucking.

The GN trailers allow for a smooth, easy pull. We have 20' to 30' trailers available with capacity up to 20,000 lb. All come with beaver tail and ramps.

Prices subject to change without notice. Sizes may vary upon location, call your local Flaman dealer for available sizes.



4'X8' UTILITY SHOWN
4'X8' - 6'X12' SIZES AVAILABLE

RENT
ME



UTILITY TRAILER RENTALS

4' x 8' Models Start@ \$60/day

Do you have leaves & branches to haul to the landfill?

Our utility trailers are perfect for the job.

STOCK TRAILER RENTALS

14' Models Start@ \$95/day

Bumper or Gooseneck Hitch

Haul your cattle or horses in one of our easy pulling stock trailers. We have 10' to 16' trailers available.

RENT
ME



14' STOCK SHOWN
10' - 16' SIZES AVAILABLE

RENT
ME



18' LOWBOY SHOWN

FLATDECK TRAILER RENTALS

18' Lowboy Trailer \$75 /day

20' Highboy Trailer \$100/day

6' x 12' Tilt Trailer \$50/day

2 Place (8.5' x 10') Sled Trailer \$50/day

4 Place (8.5' x 20') Sled Trailer \$80/day

ENCLOSED TRAILER RENTALS

Model 6' x 10' Trailer \$60/day

Model 6' x 12' Trailer \$75/day

Model 7' x 14' Trailer \$90/day

Model 8' x 20' Trailer \$115/day

Moving? Need some temporary, mobile storage?

Various sizes of cargo trailers available
Ramp or barn door options

RENT
ME



8'X23' ENCLOSED SHOWN
5'X8' - 8.5'X23' SIZES AVAILABLE

RENT
ME



7'X14' ENCLOSED SHOWN
5'X8' - 8.5'X23' SIZES AVAILABLE

We offer a full service department at our locations to better serve you.



MAINTENANCE CHECKLIST

FIRST USE / 25, 50 & 100 KM

- Tighten lugnuts at 25 km
- Tighten lugnuts at 50 km
- Tighten lugnuts at 100 km
- Rotate tires every 8,000 km
- Check tire tread pattern for wear
- Inspect brake magnets for wear
- Clean dirt buildup in roof vents & windows
- Clean and lubricate hinges & ramp slides

EVERY 6 MONTHS / 10,000 KM

- Rotate tires every 8,000 kilometers
- Check tire tread pattern for wear
- Inspect brake magnets for wear
- Clean dirt buildup in roof vents & windows
- Clean and lubricate hinges & ramp slides

EVERY 12 MONTHS / 20,000 KM

- Inspect brake shoes and drums for wear
- Check jack operation
- Check trailer structure by inspect welds, bolts & rivets
- Inspect wheel bearings

FREE INSPECTION AT 1,600 KMS OR ONE YEAR ON TRAILERS BOUGHT FROM US.

Includes, brakes, lights, and a full overall visual inspection.

Keep your trailer in good condition, come in for regular maintenance.

SERVICES INCLUDE:

- Welding
- Wiring
- Brake Service
- Brake Assembly Replacement
- Deck Installs
- Axle Replacement
- Safety Inspections
- Repack Wheel Bearings
- Hitch Installs
- Brake Control Installation
- Trailer Deck Repairs

Some of our locations also include specialized service like tractors and ag equipment. Call your nearest Flaman location for available services.

WARRANTY INFORMATION

Company	Brand	Warranty
SOUTHLAND	LT Series	1 year
	Royal	2 years
	XR	1 year
DIAMOND C	Diamond C	3 years
	Fleetneck	3 years
	Ranger	1 year
TRAILTECH	Trailtech	3 year - some exceptions
	Prospector	1 year
	MultiDeck	3 years
ROCKLINE	Air Tow	1 year
ALCOM	High Country All Sport	limited lifetime
	XPRESS	4 Years
ALUMA	All Models	5 years
ATC	Open car haulers, Northstar, Quest, ATC, RV and Signature	5 years
	Open utility and Raven	3 years
BEHNKE	B&B	1 year
CJAY TRAILERS	Bumper to Bumper	1 year
	Main Frame	3 years
FRONTIER	Horse & Stock Trailers	3 years - bumper to hitch 8 years structural
NORBERT'S MFG.	Horse & Stock Trailers	1 year on paint 2 year on construction
TRAVALUM	Horse & Stock Trailers	5 years
BRAVO	Hero	1 year
	Scout	3 years

For complete warranty information visit:

www.flamantrailers.com/warranties

*All warranties are limited unless stated otherwise



RAMP GUIDE



Company	Brand	Ramps
SOUTHLAND	XR ramps	1500 lb midspan
	Royal ramps	2500 lb midspan
	Aluminum ramps for flats/dumps	4000 lb midspan
	E270 ramps	2500 lb midspan
	LBE ramps	1500 lb midspan
	LT ramps	800 lb midspan
	LT car hauler	1500 lb midspan
DIAMOND C	18EEQ standup or slide in	10,000 lbs
	REQ stand up or slide in	10,000 lbs
	Hyd. dove tail	10,000 lbs
	7K Ranger CH	4500 lbs
	10K Ranger CH	7500 lbs
ATC	All single axle gates	1500 lbs
	Raven Car Hauler	4000 lbs midspan
	Open Car Haulers	2000 lbs each (4000 lbs total)
ALCOM	Utilities	5'6" Wide - 1000 lbs 7' Wide - 1500 lbs
	Enclosed Snowmobile Trailers	1500 lbs
	Contractor Package Removable Ramps	1500 lbs
	High Country Car Haulers	4000 lbs midspan
FOREST RIVER	XPRESS Cargo Trailer	1500 lbs midspan
	Haulin	1000 lbs midspan
	Summit	4500 lbs midspan

LOAD WEIGHTS

TONNES	DIRT				CLAY	
	DRY LOOSE	DRY PACKED	MOIST	WET	DRY	WET
1 yd ³	0.93	1.16	1.22	1.53	1.04	1.35
2 yd ³	1.86	2.33	2.45	3.06	2.09	2.69
3 yd ³	2.79	3.49	3.67	4.59	3.13	4.04
4 yd ³	3.72	4.65	4.9	6.12	4.17	5.39
5 yd ³	4.65	5.82	6.12	7.65	5.22	6.74
6 yd ³	5.58	6.98	7.35	9.19	6.26	8.08
7 yd ³	6.51	8.14	8.57	10.72	7.3	9.43
8 yd ³	7.44	9.31	9.8	12.25	8.35	10.78
9 yd ³	8.37	10.47	11.02	13.78	9.39	12.12
10 yd ³	9.3	11.63	12.25	15.31	10.43	13.47

TONNES	GRAVEL		SAND	
	DRY	WET	DRY	WET
1 yd ³	1.16	1.53	1.25	1.5
2 yd ³	2.33	3.06	2.49	2.99
3 yd ³	3.49	4.59	3.74	4.49
4 yd ³	4.65	6.12	4.99	5.99
5 yd ³	5.82	7.65	6.24	7.48
6 yd ³	6.98	9.19	7.48	8.98
7 yd ³	8.14	10.72	8.73	10.48
8 yd ³	9.31	12.25	9.98	11.97
9 yd ³	10.47	13.78	11.23	13.47
10 yd ³	11.63	15.31	12.47	14.97

FLAMAN
TRAILERS

We've Updated Our Website
CHECK IT OUT!
www.flamantrailers.com

Allowing you to order the exact trailer you're looking at online without having to drive to a dealership.

www.flamantrailers.com



BUY NOW!

WE DELIVER!

We will deliver the trailer of your choice right to your door.

VISIT US AT WWW.FLAMAN.COM/WEDELIVER FOR MORE INFORMATION AND PRODUCT AVAILABILITY, RESTRICTIONS APPLY.



CURTIS ZERR
Goodsoil, SK



Check out our blogs, videos, photo galleries & more.

www.flaman.com/clearance

Visit us in person!

Saskatoon, SK
Hwy #16 & 71st St
306-934-2121

Moosomin, SK
Hwy #1 West
306-435-4143

Prince Albert, SK
Hwy #2 South
306-764-6004

Yorkton, SK
Hwy #16 East
306-783-1689

Southey, SK
Hwy #6
306-726-4403

Swan River, MB
Hwy #83A
204-734-9999