

XR-SLED

Work Hard, Play hard

2012

SLED TRAILER LINE up



Popular Options

Helmet Cabinet

Heater Package

Insulation Packages

Window 18" x 48"

Two Tone Option



- XRARSMT35-8520-78 **High Boy**
- XRARSMT35-8520-78 **Low Boy**
- XRARSMT35-8526-78 **High Boy**
- XRARSMT35-8526-78 **Low Boy**
- XRARSMT35-722-78 **Low Boy**

www.southlandtrailers.com



XR-SLED

It's getting close to sled season again

2012

SLED TRAILER LINE up



High Boy
XRARSMT35-8520-78

SOUTHLAND
TRAILER CORP

www.southlandtrailers.com



Low Boy
XRARSMT35-8520-78

XR-SLED

Work Hard, Play Hard



XR

XR 4 Place Sled Trailer

4

XRARSMT35-8520-78

XR

XR 3 Place Sled Trailer

3



XRARSMT35-8526-78

Standard Specifications

- 2-5/16 in Adjustable Ball Coupler
- 5000 lb. Drop Leg Jack
- 8 ft Wide Inside
- 78.0" Wall Height
- 32.0" Deck Height
- HSS Tubing Main Frame
- HSS Tubing Cross Members @ 24" o/c
- HSS Structural Tubing Uprights
- Industry Leading Skeleton HSS construction
- 3/4" Mezzanine Decking Floor & Ramps
- .028" Seamless Aluminum Roof Skin
- Rivetless .030 Aluminum Exterior Bond with 3M "VHB" 2 sided tape

Standard Features

- Mirrored Aluminum V-Nose
- White Aluminum Ceiling & Walls
- Bolt-on Safety Chains c/w Hooks
- 24.0" Aluminum Checkerplate
- 7-Prong RV Style Trailer Connector
- Rechargeable Breakaway Kit
- 1/2 in Arched Roof
- Enclosed Wiring
- 1 - Interior Light at Side Door, 1 @ Rear
- Lighted License Plate Holder
- 30.0" x 72.0" Side Door
- c/w RV Latch & Door Hold Back
- Spring Assist Front & Rear Ramp
- c/w Ski guides
- Dovetail at Rear
- Mud Flaps
- Automotive Undercoating
- 1200 lb Floor D-Rings
- Fuel Door in Road Side Wall
- 2 - Aluminum Adjustable Two Way Vents
- LED Tail lights
- RV Step

Running Gear

- Two 3500 lb Torsion Axle
- Electric Brakes
- 4 - ST205/75R15 Radial Tires
- 15.0" Aluminum Rims

Optional Heater Package

- 20,000 BTU Heater Forced Air
- Wall Thermostat
- Battery with charge kit



D-RINGS



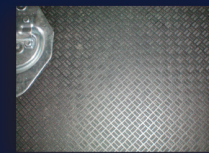
120 VOLT SHORELINE



SIDE WINDOWS



L.E.D. TAIL LIGHTS



MEZZANINE DECKING



AUTOMOTIVE UNDERCOATING



GALVANIZED HEAVY DUTY DOOR HINGES